



07

# CLOTHING





Fashion's  
fastest catwalk

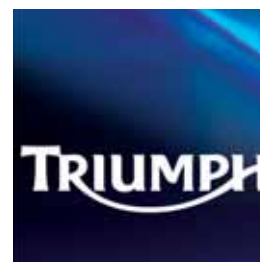
Leatherwear 6



Outerwear 24



Boots 40



GO  
YOUR  
OWN  
WAY

3



Gloves 42



Corporatewear 44



Personal  
Accessories 56





Triumph.  
The alternative  
designer label



Little known fact: Triumph design their own motorcycle clothing. We don't badge other people's stuff with Triumph logos – we couldn't sleep at night. Only by controlling the design and spec ourselves – just like we do with our bikes – can we be sure to get the performance that modern motorcycle clothing must have. And anyway, who wants to wear the same thing as everybody else? This way you get clothing that's as individual and stylish as your bike. Same rules apply to our casual stuff. T-shirts and sweats may not have to perform like motorcycle clothing, but they still have to look good.

Jackets are tailored to be just as comfortable when you're riding as when you're not. To that end, we create different designs for different bikes in the range. So a jacket cut for a more radical riding position like that of a Daytona 675 will be different to a jacket designed for a more relaxed bike like a Bonneville.



# LEATHERWEAR



Hide and seek





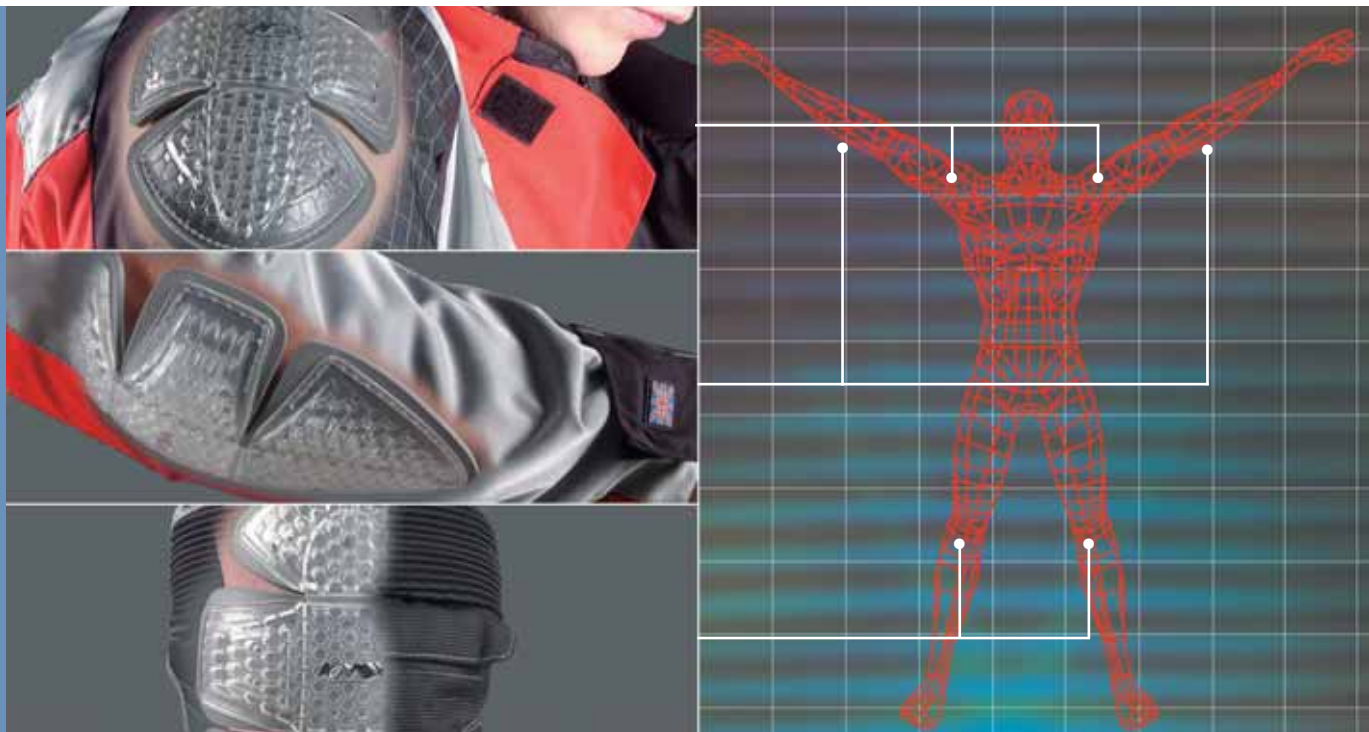
Technical  
performance and  
hard Knox



Triumph's leatherwear is made from full grain leather. This comes at a premium because the hides have to be free from any potential weak spots – like those created by a brush with a barbed wire fence for instance.

Impact seams are double or triple-stitched. That way, if the exposed stitching is abraded, the deeper, hidden stitching is there as a second line of defence to save the integrity of the garment – and your skin. Similarly, we use double leather panels in vulnerable areas like elbows and seats to give better resistance to abrasion.

## Leatherwear



Protective armour in our leather and textile clothing comfortably exceeds the latest safety standards. Well, it would do – it's supplied by Knox, world leaders in impact protection for motorcyclists – including MotoGP and Superbike riders. Despite being flexible and ultra light, the Knox Air CE approved protectors we've chosen perform brilliantly. Their immensely hard outer shell is injected to form a hexagonal inner crumple zone. The additional EVA rubber lining absorbs even more energy.

### Paragon 2-piece suit

1.2 mm leather

Easily removable CE95 protectors – shoulder, elbow and knee  
Double leather panels – seat and knee  
Double and triple stitched impact seams

Kepron stretch panels  
Racing hump  
Dual density back insert  
3M<sup>®</sup> night reflective piping – front and rear

Hip padding  
Velcro attached knee sliders  
Jacket and jeans available separately



## Leatherwear

### Urban Sports

### Mens





### Genetix Jacket

1.2mm leather  
 Easily removable CE95 protectors – shoulder and elbow  
 Double and triple stitched impact seams  
 Dual density back insert  
 Removable aluminium windproof liner  
 Removable fleece neck warmer  
 3M® night reflective piping – front and rear  
 Hidden ventilation panels  
 Waist connection zipper supplied



### Alibi Jacket

1.2mm leather  
 Easily removable CE95 protectors – shoulder and elbow  
 Double stitched impact seams  
 Dual density back insert  
 3M® night reflective piping – front and rear  
 Hidden ventilation panels  
 Option to fit fleece neck warmer  
 Waist connection zipper supplied



### Hawk Jacket

1.2mm leather  
 Easily removable CE95 protectors – shoulder and elbow  
 Double stitched impact seams  
 Dual density back insert  
 3M® night reflective piping – front and rear  
 Option to fit fleece neck warmer  
 Waist connection zipper supplied



### Aftermath Jacket

1 mm leather  
 Easily removable CE95 protectors – shoulder and elbow  
 Double stitched impact seams  
 3M® night reflective piping – rear  
 Option to fit fleece neck warmer  
 Waist connection zipper supplied



## Leatherwear

### Modern Classics

### Mens



## Romero Jacket

1.2mm leather  
 Easily removable CE95 protectors – shoulder and elbow  
 Double stitched impact seams  
 Large leather back logo  
 Option to fit fleece neck warmer  
 Waist connection zipper supplied

## Retro Jacket

1.2mm leather  
 Easily removable CE95 protectors – shoulder and elbow  
 Double stitched impact seams  
 Large leather back logo  
 Option to fit fleece neck warmer  
 Waist connection zipper supplied





### Ace Jacket

- 1.2mm leather
- Easily removable CE95 protectors – shoulder and elbow
- Double stitched impact seams
- Large printed back logo
- Option to fit fleece neck warmer
- Waist connection zipper supplied





### Garrick Jacket

1.2mm leather  
 Easily removable CE95 protectors – shoulder and elbow  
 Double stitched impact seams  
 Stitch detailed back logo  
 Option to fit fleece neck warmer  
 Waist connection zipper supplied



### Rivton Jacket

1.2mm leather  
 Easily removable CE95 protectors – shoulder and elbow  
 Double stitched impact seams  
 3M® night reflective piping – front and rear  
 Option to fit fleece neck warmer  
 Waist connection zipper supplied

**Samford Jacket** Cruisers

1mm leather  
Easily removable CE95 protectors – shoulder and elbow  
Double leather stitched impact seams  
Hidden ventilation panels  
Large embossed back logo  
Option to fit fleece neck warmer  
Waist connection zipper supplied



# Leatherwear

Cruisers  
Fashion

Mens





### Rocket III Jacket Cruisers

1.2mm leather  
 Easily removable CE95 protectors – shoulder and elbow  
 Double stitched impact seams  
 Removable aluminium windproof liner

Hidden ventilation panels  
 Large patch back logo  
 Option to fit a fleece neck warmer  
 Waist connection zipper supplied



### Westbourne Jacket Cruisers

1.2mm leather  
 Easily removable CE95 protectors – shoulder and elbow  
 Double stitched impact seams  
 Removable aluminium windproof liner  
 3M® night reflective piping – front and rear  
 Hidden ventilation panels  
 Large embossed back logo  
 Waist connection zipper supplied



**Moncler Jacket** Fashion  
 Nubuck leather  
 Multi-colour zippers



**Madison Jacket** Fashion  
 Antiqued leather  
 Printed distressed back logo  
 Pockets for protectors





Leatherwear

Jeans

Mens



### Classic Jeans II

1.2mm leather  
Removable CE95 protectors – knee  
Double leather panels – knee and seat  
Cordura stretch panels  
Double stitched impact seams  
Hip padding  
Waist connection zipper supplied



### Western Jeans

1mm leather  
Removable CE95 approved protectors – knee  
Adjustable knee protector pockets – allow varying leg lengths  
Double stitched impact seams  
Boot cut



### New Sport Jeans

1.2mm leather  
Removable CE95 approved protectors – knee  
Double leather panels – seat, knee and thigh  
Keoprotec® stretch panels

Double stitched impact seams  
3M® night reflective fabric  
Hip padding  
Velcro attached knee sliders  
Waist connection zipper supplied



### Motiv Jacket

1.2mm leather  
 Easily removable CE95 protectors – shoulder and elbow  
 Double stitched impact seams  
 Dual density back insert

3M™ night reflective piping – front and rear  
 Hidden ventilation panels  
 Option to fit fleece neck warmer  
 Waist connection zipper supplied



## Leatherwear

Urban Sports  
 Modern Classics

Ladies





### Raven Jacket Urban Sports

1.2mm leather  
 Easily removable CE95 protectors – shoulder and elbow  
 Double stitched impact seams  
 Dual density back insert  
 3M® night reflective piping – front and rear

Large leather back logo  
 Option to fit fleece neck warmer  
 Waist connection zipper supplied



### Ember Jacket Modern Classics

1.2mm leather  
 Easily removable CE95 protectors – shoulder and elbow  
 Double stitched impact seams  
 Stitched detailed logo  
 Option to fit fleece neck warmer  
 Waist connection zipper supplied



### Melina Jacket Modern Classics

1mm leather  
 Easily removable CE95 protectors – shoulder and elbow  
 Double stitched impact seams  
 Stitch detailed back logo  
 Option to fit fleece neck warmer  
 Waist connection zipper supplied





### Compton Jacket Cruisers

1mm leather  
 Easily removable CE95 protectors – shoulder and elbow  
 Double stitched impact seams  
 Hidden ventilation panels  
 Option to fit fleece neck warmer  
 Waist connection zipper supplied



### Roxy Jacket Cruisers

1mm leather  
 Easily removable CE95 protectors – shoulder and elbow  
 Double stitched impact seams  
 Printed distressed back logo  
 Option to fit fleece neck warmer  
 Waist connection zipper supplied



## Leatherwear

Cruisers  
 Fashion  
 Jeans

Ladies



**Chalcot Jacket** Fashion  
Soft washed leather



**Chalcot Nubuck Jacket** Fashion  
Soft washed nubuck leather  
Multi-colour zippers



**Western Jeans**  
1mm leather  
Removable CE95 protectors – knee  
Adjustable knee protector pockets – allow varying leg lengths  
Double stitched impact seams  
Boot cut



# OUTERWEAR





Riding in a  
material world





## Outerwear







Take our jackets for  
a dry run



You can ride a bike in pretty much any kind of weather provided you're dry. That's why we use Sympatex® in our clothing. Sympatex® is a clever, polyester-based membrane that allows vapour to escape (so you don't get damp) but keeps wet weather out. It doesn't rely on tiny holes to work, so unlike some technical membranes it won't gradually block with dirt and become less effective over time. Sympatex® is a German company with 25 years' experience of making waterproof products and whilst they use their ingenuity trying to make our products leak under lab conditions, we do our torture tests with Triumph test riders on real roads. Result? Clothing that could keep blotting paper dry in a monsoon.





### Sympatex® Tiga Jacket

Waterproof, breathable and windproof  
 Hiten® nylon water repellent outer fabric\*  
 Removable CE95 protectors –  
 shoulder and elbow  
 Removable dual density back insert  
 Printed back logo

Sleeve width adjusters  
 3M® night reflective tape  
 Option to fit fleece neck warmer  
 Waist connection zipper supplied  
 Air Flow Tech – ventilation air  
 flow panels; front, arm and back

\*Hiten® is a highly abrasive material with a twisted yarn



### Sympatex® Pantha Jacket

Waterproof, breathable and windproof  
 Hiten® nylon water repellent outer fabric\*  
 Removable CE95 protectors –  
 shoulder and elbow  
 Removable dual density back insert  
 Printed back logo

Sleeve width adjusters  
 3M® night reflective tape  
 Option to fit fleece neck warmer  
 Waist connection zipper supplied  
 Air Flow Tech – ventilation air  
 flow panels; front, arm and back

## Outerwear

### Urban Sports

### Mens



### Tornado II Jacket

Waterproof, breathable and windproof  
 Hiten® nylon water repellent outer fabric\*  
 Removable CE95 protectors – shoulder and elbow  
 Removable dual density back insert  
 Sleeve width adjusters  
 3M® night reflective tape  
 Option to fit fleece neck warmer  
 Waist connection zipper supplied

\*Hiten® is a highly abrasive material with a twisted yarn



### Integra Jacket

Fully perforated panels and Cordura construction  
 Integrated waterproof cover  
 Removable CE95 protectors – shoulder and elbow  
 Removable dual density back insert  
 Sleeve width adjusters  
 3M® night reflective tape  
 Waist connection zipper supplied



### Integra Jacket





### Denim Jacket

Ring-spun washed denim outer fabric  
Keprotec® reinforced panels - shoulder and elbow



### Revolution Jacket

Waxed Cotton water repellent outer fabric  
Removable CE95 protectors – shoulder and elbow  
Hidden Polycordura panels in shoulders and arms for extra protection  
Stitch detailed back logo  
3M® night reflective piping – back  
Option to fit fleece neck warmer  
Waist connection zipper supplied



## Outerwear

### Modern Classics

### Mens



### Retro Paddock Jacket

Cordura water repellent outer fabric  
Removable quilted liner  
Removable CE95 protectors – shoulder and elbow  
Hidden ventilation panels  
Large leather back logo  
Option to fit fleece neck warmer  
Waist connection zipper supplied



### Rochester Mesh Jacket

Fully perforated panels and Cordura construction  
Removable CE95 protectors – shoulder and elbow  
Large leather back logo  
Waist connection zipper supplied



### Connaught Jacket

Oxford nylon water repellent outer fabric  
Removable CE95 protectors – shoulder and elbow  
Large leather back logo  
Option to fit fleece neck warmer  
Waist connection zipper supplied





**Harland Jacket**

Cotton outer fabric  
Stitch detailed back logo



**Burlington Jacket**

Washed cotton outer fabric



## Outerwear

Fashion  
Team

Mens



### Stanton Jacket

Water repellent outer fabric  
Removable quilted liner



### Team Blouson

Water repellent outer fabric  
Large embroidered back logo



### Garrick Jacket

Water repellent outer fabric  
Stitch detailed back logo  
Pockets for protectors – shoulder and elbow



### College Jacket

Melton Body  
Large leather back logo





### Chevron Oversuit

Waterproof nylon fabric  
 Step in – step out design  
 2 full length zippers  
 3M® night reflective chevron shoulder design  
 3M® night reflective slash back stripe  
 Bum bag for storage



### Chevron 2 piece Suit

Waterproof nylon fabric  
 2 large storage pockets on jacket  
 3M® night reflective chevron shoulder design  
 Ankle to knee length zippers  
 Jacket and pants available separately

## Outerwear

Function  
 Jeans

Mens



### Western Jeans

Waterproof, breathable and windproof  
 Cordura® water repellent outer fabric  
 Easily removable CE95 protectors – knee  
 Adjustable knee protector pockets – allow varying leg lengths  
 Double stitched impact seams  
 Reinforced knee and seat areas  
 Boot cut

### Sympatex® Frontier Pants II

Waterproof, breathable and windproof  
 Cordura® water repellent outer fabric  
 Easily removable CE95 protectors – knee  
 Double stitched impact seams  
 Hip padding  
 Removable quilted liner  
 Reinforced knee and seat areas  
 Ankle to thigh zippers  
 Waist connection zipper supplied



### Tornado Jeans

Waterproof, breathable and windproof  
 Hiten® water repellent outer fabric\*  
 Easily removable CE95 protectors – knee  
 Double stitched impact seams  
 Hip padding  
 Removable quilted knee sliders  
 Reinforced knee and seat areas  
 Waist connection zipper supplied

### Denim Jeans

Ring-spun washed denim outer fabric  
 Keprotec® reinforced panels – knee and seat  
 Boot cut  
 Variety of leg lengths available

\*Hiten® is a highly abrasive material with a twisted yarn





## Outerwear

Urban Sports  
Modern Classics

Ladies

### Integra Jacket

Fully perforated panels and Cordura® construction  
Integrated waterproof cover  
Removable CE95 protectors – shoulder and elbow  
Removable dual density back insert  
Sleeve width adjusters  
3M® night reflective tape  
Waist connection zipper supplied



### Sympatex® Seeta Jacket

Waterproof, breathable and windproof  
 Hiten® nylon water repellent outer fabric\*  
 Air Flow Tech – ventilation air flow – front, arms and back  
 Removable CE95 protectors – shoulder and elbow  
 Removable dual density back insert

Printed back logo  
 Sleeve width adjusters  
 3M® night reflective tape  
 Option to fit fleece neck warmer  
 Waist connection zipper supplied

\*Hiten® is a highly abrasive material with a twisted yarn



### Denim Jacket

Ring-spun washed denim outer fabric  
 Keprotec® reinforced panels – shoulder and elbow



### Donma Jacket

Oxford nylon water repellent outer fabric  
 Removable CE95 protectors – shoulder and elbow  
 Large leather back logo  
 Waist connection zipper supplied





## Outerwear

Fashion  
Jeans

Ladies

### Tabac Jacket

Washed cotton outer fabric  
Printed and embroidered back logo



### Pinda Jacket

Water repellent outer fabric  
Pockets for protectors



### Western Jeans

Waterproof, breathable and windproof  
Cordura® water repellent outer fabric  
Easily removable CE95 protectors – knee  
Adjustable knee protector pockets – allow varying leg lengths  
Double stitched impact seams  
Reinforced knee and seat areas  
Boot cut



### Denim Jeans

Ring-spun washed denim outer fabric  
Keprotect® reinforced panels – knee and seat  
Boot cut  
Variety of leg lengths available







## Boots



### Sympatex® Socks

Windproof and breathable	Size	
Lightweight durable construction	37/38	M9350003
Added support features	39/40	M9350103
High insulation capabilities	41/42	M9350203
Quick drying	43/44	M9350303
Moisture transportation system	45/46	M9350403
Micro fibre properties for continuous freshness		



### Sympatex® Expedition II Boot

Waterproof, breathable and windproof  
Full leather construction  
Gear change protector  
Ankle, heel and shin guards  
Logos embossed  
3M® night reflective panel  
Non slip rubber sole  
Toe slider



### Team Boot

Ballistic nylon and leather construction  
Non slip rubber sole

### Sympatex® Explorer II Boot

Waterproof, breathable and windproof  
Leather and nubuck construction  
Gear change protector  
Ankle and heel guards  
Velcro fastening  
3M® night reflective panel  
Non slip rubber sole  
Available in ladies sizes



### Sympatex® Tritech II Boot

Waterproof, breathable and windproof  
Leather construction  
Ankle guards  
3M® night reflective panel  
Non slip rubber sole  
Available in ladies sizes



### Highway Boot

Full leather construction  
Antiqued Adjusters  
Logos embossed  
Non slip rubber sole  
Available in ladies sizes





## Gloves

### Highway Glove

All leather construction  
Double leather palm section  
Keprotec® abrasion panels  
Double leather impact panels  
Ventilated finger panels  
Available in ladies sizes

### Perforated Highway Glove

Perforated version of the Highway Glove  
Available in ladies sizes

### Raptor Vented Glove

Perforated mesh fabric and leather construction  
Ventilated hard knuckle panels  
Slimline sports cuff with adjuster  
Keprotec® abrasion panels  
Available in ladies sizes

### Hard Carbon Glove

Full knuckle carbon weave panel  
Keprotec® abrasion panels  
Double leather impact panels  
Raised wrist padding  
3M® night reflective piping  
Ventilated finger sections  
Available in ladies sizes



### Sympatex® Sport Glove

Waterproof, breathable and windproof  
All leather construction  
Hard carbon weave panels  
Keprotec® abrasion panels  
Non slip grip panels  
Raised wrist padding  
3M® night reflective piping  
Available in ladies sizes



### Sympatex® All Leather II Glove

Waterproof, breathable and windproof  
All leather construction  
Keprotec® abrasion panels  
Raised wrist padding  
3M® night reflective piping  
Thinsulate lining  
Visor wipe



### Sympatex® Expedition Glove

Waterproof, breathable and windproof  
Hitena and leather construction  
Hard knuckle panels  
Keprotec® abrasion panels  
Raised wrist padding  
3M® night reflective piping  
Thinsulate lining  
Visor wipe  
Double strap wrist fastening



### Sympatex® Explorer II Glove

Waterproof, breathable and windproof  
Lightweight water repellent outer fabric  
Leather palm, finger and knuckle sections  
Keprotec® abrasion panels  
3M® night reflective piping  
Raised knuckle pads  
Available in ladies sizes



### Roadster Glove

Hitena and leather construction  
Ventilated hard knuckle panels  
Keprotec® abrasion panels  
Non slip palm panels  
3M® night reflective piping  
Raised wrist padding  
Double strap wrist fastening



# CORPORATEWEAR





## Cool off

If you want to look just as cool off your bike as on, this is the place. And all you retro riders, check out the great new vintage tees in the Sixty8 range – all inspired by classic images from period ads and posters.





Pullover Hoodie  
Black



Fashion Shirts  
Black  
Grey

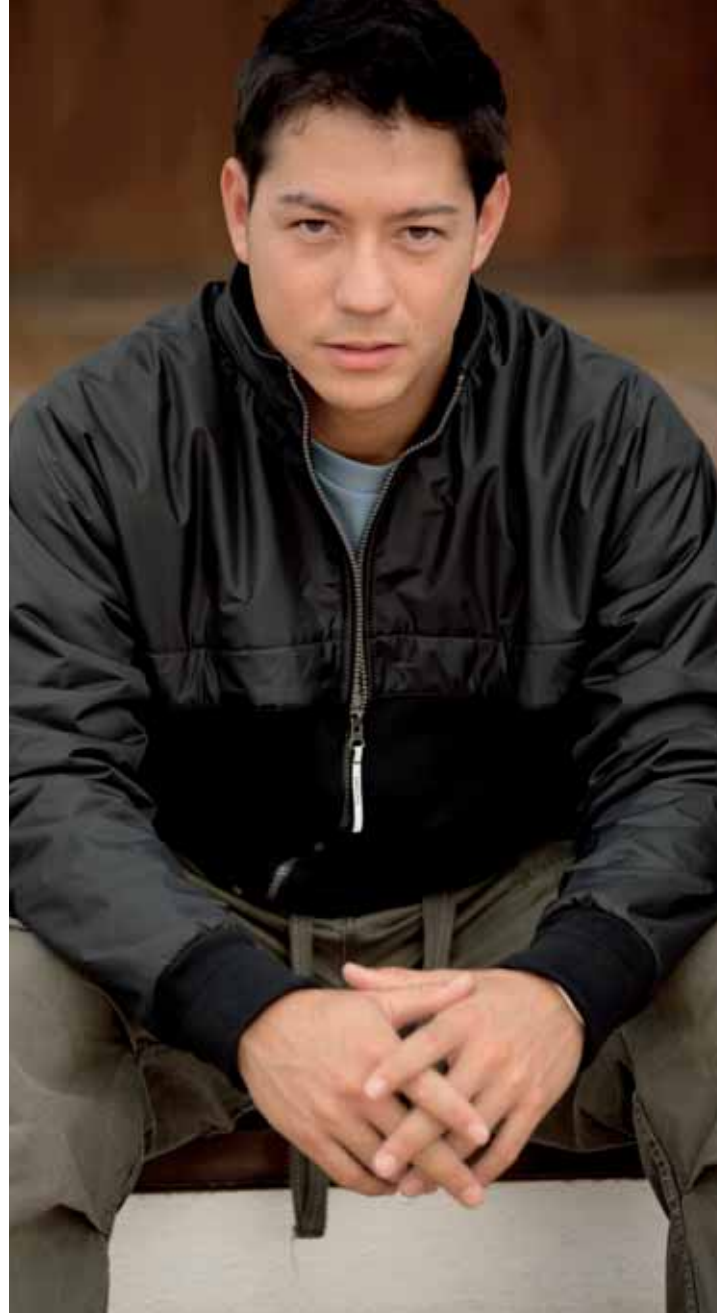
## Corporatewear

Sweatshirts  
Fashion Shirts

Mens



Riders Zip Thru  
Navy/Red/Ecru



Urban Zip Thru  
Black



Yellow Zip Thru  
Yellow/Black





# Corporatewear

## Mens

Triumph's range of vintage sixty8 T-shirts are inspired by classic images from our archive of vintage tees, period ads and posters. With a modern re-mix, these T-shirts are the authentic alternative.





Global Ecrû/blue Retro Circle Dark Grey Flying Bike Orange Go Modern Grey Sixty8 Red

Deco Burgundy Scotland Yard Taupe Dylan T-shirt White Dylan T-shirt Navy





Corporatewear

Mens



**Rocket III # 5**

Black

**Daytona Triple**

Navy

**Hot Wheels**

Black

**Scrambler**

Red



**Felt Logo**

Grey

**Motorcycle Club**

Light Blue

**Riders**

White

**Punk**

Black

**Japan**

Red

**2 in 1 Tee**

Black



**Stripe Polo Long Sleeve**

Navy

**Stripe Polo Short Sleeve**

White

**Spray Logo**

Navy

**Reverse Spray Logo**

Black

**Fabulous Hinckley**

Black (rear shot)

**Fabulous Hinckley**

Black (back shot)





# Team

## Riders Association of Triumph

### The technical department

Specially developed with Triumph's own riders in mind, this is a range of clothing for wearing off bike or under your motorcycle kit. The range includes clothing with a high level of technical performance to give you maximum comfort in all riding conditions: Tri-Thermo to keep you warm without the need for bulky layers; Tri-Dri to wick moisture away from the body. Thinking of crossing the Gobi on a sunny day? No sweat.



**Team Polo**

Navy

**Team Shirt #2**

Navy  
Straight cut fit

**Team Shirt #1**

White  
Slim fit



**RAT Tri-Thermo**

Fleece

Black

**RAT Stripe Polo**

Grey/Black

**RAT Tri-Dri Polo**

Black/Grey

**RAT T shirt**

Navy  
White







Motorcycle Club Zip Thru  
Ecru/Navy/Red



Velour Zip Thru  
Plum



Team Shirt # 1  
White

# Corporatewear

Sweatshirts  
Team  
Fashion Shirts

Ladies



Fashion Shirt  
Black



Fashion Shirt  
Grey



Snap Vest

White

Stretch Rib

Black

Summer Vest

Brown



Star Print

Lilac

Cap Sleeve Polo

Aqua

Sparkle Vest

Black



Vest W

Black

Motorcycle Club

Vest

Brown

Trim Vest

Black



# Corporatewear

## Casualwear

## Ladies



**Japan**

Red

**Reverse Spray**

Black

**Motorcycle Club**

Red

**Reverse Stud**

Grey



**Ride On**

Light Blue

**Bad Girls**

Pink

**Foil Logo**

Light Blue

**Spray Logo**

Navy



**Retro Circle**

Ecu

**Dylan T-shirt**

Navy

**Dylan T-shirt**

White

**Global**

Ecu/blue







## Personal Accessories

Watches  
Headgear

### Ladies Diamond Chrono

M9413206  
36mm stainless steel case  
8 diamonds on bezel  
Stainless steel strap  
10 ATM

### Sport Classic Watch

M9413006  
42mm stainless steel case  
Black leather strap  
10 ATM

### Carbon Chrono III

M9413106  
43mm stainless steel case  
Carbon fibre face  
10 ATM



59

Black Cord Cap M9392505

Union Flag Wing Cap M9392405

Sport #1 Cap M9392305

Striped Beanie Blue M8801005

Navy Beanie #2 M8801206





## Personal Accessories

Belts & Buckles



#### Rivet Belt Mens

Small/Medium  
M9291005  
Large/X-Large  
M9291105

#### Rivet Belt Ladies

X-small/Medium  
M9292005  
Large/3-L  
M9292105

#### Triumph Brass Tank Buckle

M9280506

#### Buckles:

Tiger Buckle M9281405

Half Union Flag Buckle M9281305

Round Stripe Buckle M9281205

Union Shield Buckle M9281505

Ladies Sparkle Buckle M9282405

#### Jeans Belt:

Extra Small M9290405

Small M9290505

Medium M9290605

Large M9290705

Extra Large M9290805





### Courier PC Bag

Tough Ballistic nylon fabric  
Cushioned pillow tech section  
Key ring clip  
Open mesh pocket  
Phone pocket  
Retractable I.D. tag  
Riding waist band restraint  
Suitcase strap  
Removable mesh cable case  
M9343206



### Helmet Rucksack

16/20 Litre extendable capacity  
Helmet carrying compartment  
Multi pocket design  
Key lock included  
M9343005



## Personal Accessories



**Wall Clock #2**  
M9401005  
300mm Diameter  
Battery Powered  
**Riders Mouse  
Mat #3**  
M9120106



**Ashtray #2**  
M2181005  
**Hip Flask**  
Leather Bound  
M9502005



**Carbon Ballpoint #2**  
M8000306  
**Money Box**  
Ceramic  
M2181105



**Key Fobs:**  
**Triangular**  
M9460095  
**Rubber #2**  
M9471005  
**Oval**  
M9460000



**Lighter #11**  
M9440005-BF  
**Lighter #12**  
M9440006-FH  
**Lighter #13**  
M9440006-WP



**Kit Bag**  
40 Litre capacity  
Key Lock included  
M9343105



**Collectors Limited  
Edition Rocket III**  
1:12th die cast scale model  
Black M2002104-BLK  
Red M2002104-RED  
Grey M2002104-GRT



**Collectors Limited  
Edition Bonneville  
T120 1959**  
M2001204  
1:12th die cast scale model



**Triumph by  
Paul Smith  
Multi Union  
Bonneville**  
1:18th die cast scale model  
M2002205  
**Rocket III**  
1:18th die cast scale model  
M2002306  
Variety of models available



- Patches:  
 Rectangle  
 M9480095  
 Round stripe  
 M9481705  
 Half Union  
 M9481805  
 White Wing  
 M9481905  
 Blue Wing  
 M9482005  
 Union Flag wing  
 M9482105  
 World  
 M9482206  
 Sixty8  
 M9482306  
 Riders  
 M9482406  
 Union Jack Patch  
 M9480398



- Bufs  
 Micro fibre neck tubes  
 A. Sports Buff #3  
 M9431005  
 B. Polar Buff #2  
 M9431305  
 C. Classic Buff #3  
 M9431105  
 D. Cruiser Buff  
 M9431205

Bufs – micro fibre neck tubes:

- |                               |                                |
|-------------------------------|--------------------------------|
| A. Sports Buff #4<br>M9431406 | C. Classic Buff #4<br>M9431606 |
| B. Polar Buff #3<br>M9431506  | D. Cruiser Buff #2<br>M9431706 |

Beach Towel

M9360006  
 180cm x 102cm



**Stainless steel Mug**

300ml

M9420104

**Coasters**

Stainless steel set of 4

M9501104

**Leather CD Holder**

M9381305



**Bottle Opener #2**

M9501306

**Retro Circle Cufflinks**

M9500506

**A5 Notebook**

M9503006



**Belt and Buckle Set**

M9500403

**Fabulous Hinckley Mug**

M2182806

**Logo Black Mug**

M2182606

**Flying Bike Mug**

M2182706



**Childrens Clothing**

1. Nine Bikes

2. Colourful Bike Hoodie

3. I Love My Triumph



**Sticker Sets:**

**Window Decal set #2**

M9111005

**Factory Sticker set #3**

M9110005

**Factory Sticker set #4**

M9110105



**Wallets:**

**Leather Wallet with Chain**

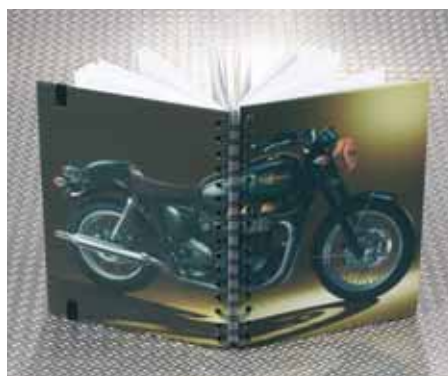
M9381205

**Leather Card Wallet #2**

M9381105

**Leather Wallet #2**

M9381005





## Mens Size Chart

### Shoe Sizes:

UK	Euro	US
6 1/2	40	7 1/2
7	41	8
8	42	9
9	43	10
9 1/2	44	10 1/2
10	45	11
11	46	12

### Jacket Sizes:

UK	Euro	US	INT	Chest cm/in	Waist cm/in
34	44	34	XS	79-84/31-33	69-74/27-29
36	46	36	XS	84-89/33-35	74-79/29-31
38	48	38	S	89-94/35-37	79-84/31-33
40	50	40	S	94-99/37-39	84-89/33-35
42	52	42	M	99-104/39-41	89-94/35-37
44	54	44	M	104-109/41-43	94-99/37-39
46	56	46	L	109-114/43-45	99-104/39-41
48	58	48	L	114-119/45-47	104-109/41-43
50	60	50	XL	119-124/47-49	109-114/43-45
52	62	52	XL	124-129/49-51	114-119/45-47
54	64	54	XXL	129-134/51-53	119-124/47-49
56	66	56	XXL	134-139/53-55	124-129/49-51

### Jeans Sizes:

UK	Euro	US	INT	Waist cm/in	Hips cm/in	Inseam cm/in
30	40	30	XS	74-79/29-31	96-100/38-39	86/34
32	42	32	S	79-84/31-33	100-104/39-41	87/34
34	44	34	M	84-89/33-35	104-108/41-42	88/35
36	46	36	L	89-94/35-37	108-112/42-44	89/35
38	48	38	XL	94-99/37-39	112-116/44-45	90/35
40	50	40	XXL	99-104/39-41	116-120/45-47	91/36
42	52	42	XXXL	104-109/41-43	120-124/47-48	92/36

## Ladies Size Chart

### Shoe Sizes:

UK	Euro	US
4	37	5 1/2
5	38	6 1/2
6	39	7

### Jacket Sizes:

UK	Euro	US	INT	Chest cm/in	Waist cm/in
10	38	8	XS	85-90/33-35	65-70/25-27
12	40	10	S	90-95/35-37	70-75/27-29
14	42	12	M	95-100/37-39	75-80/29-31
16	44	14	L	100-105/39-41	80-85/31-33
18	46	16	2L	105-110/41-43	85-90/33-35

### Jeans Sizes:

UK	Euro	US	INT	Waist cm/in	Hips cm/in	Inseam cm/in
10	38	8	XS	65-70/25-27	95-100/37-39	75-80/29
12	40	10	S	70-75/27-29	100-105/39-41	76-81.5/30
14	42	12	M	75-80/29-31	105-110/41-43	77-83/31
16	44	14	L	80-85/31-33	110-115/43-45	78-84.5/32
18	46	16	2L	85-90/33-35	115-120/45-47	79-86/33

Size chart is only a guide. Sizes of some products may vary due to style and cut of garments. Please visit your Triumph dealer.

# Size Chart

## Non-Illustrated Products

### Protectors

- L&K Protector Set (2pc) M2250001
- Dual Density Back Insert M2250101
- Knox Protector Set (2pc) M2250203

Fleece Neck Warmer M2030000

### Hangers

- Coat Hanger M8890002
- Trouser Hanger M8890102
- Shirt Hanger M8890203

### P.O.S. Display

- Buff Totem M9410503
- Watch Display Unit M9412405

### Mens Integra W/Proof Cover

- 38 M3523805
- 40 M3524005
- 42 M3524205
- 44 M3524405
- 46 M3524605
- 48 M3524805
- 50 M3525005
- 52 M3525205
- 54 M3525405
- 56 M3525605

### Ladies Integra W/Proof Cover

- XS M3520005
- S M3520105
- M M3520205
- L M3520305
- 2L M3520405
- 3L M3520505



# GO YOUR OWN WAY

At Triumph we want every ride to be safe and enjoyable. Be sure to ride safely, defensively and within the limits of the law, the road conditions and your abilities. Take a riding skills course. Always wear an approved helmet, eye protection and appropriate clothing and always insist that any passenger does the same. Never ride while under the influence of alcohol or drugs. Study your owner's manual and always inspect your Triumph before riding.

All details correct at time of going to press.

Triumph Motorcycles Limited reserve the right to make changes without prior notice.

Please consult your dealer for product and colour availability. Triumph International holds the rights in the word Triumph in classes 10 and 23 to 26.

© 2006 Triumph Motorcycles Limited.  
All rights reserved.  
Triumph Motorcycles Limited,  
Normandy Way, Hinckley LE10 3BZ  
England

[www.triumphmotorcycles.com](http://www.triumphmotorcycles.com)

None of the products featured in this brochure are sold as safety garments.

T3864396



**AUSTRALIA**  
Triumph Australia  
Tel: 61 3 9381 9766  
Fax: 61 3 9381 9798

**AUSTRIA**  
Triumph Motorrad  
Deutschland GmbH  
Tel: 49 6175 933610  
Fax: 49 6175 933627

**BENELUX**  
Triumph Motorcycles BV  
Tel: 31 725 410311  
Fax: 31 725 410312

**BRAZIL**  
Gruppo Izzo  
Tel: 55 11 3081 7873  
Fax: 55 11 3081 7873

**CANADA**  
Triumph Motorcycles  
(America) Ltd  
Tel: 1 678 854 2010  
Fax: 1 678 854 2025

**DENMARK**  
Triumph Motorcycles AB  
Tel: 46 868 00725  
Fax: 46 868 00785

**EIRE**  
Triumph Motorcycles Limited  
Tel: 44 1455 251700  
Fax: 44 1455 453104

**FINLAND**  
Triumph Motorcycles AB  
Tel: 46 868 00725  
Fax: 46 868 00785

**FRANCE**  
Triumph S.A.S  
Tel: 33 1 64 62 38 38  
Fax: 33 1 64 80 58 28

**GERMANY**  
Triumph Motorrad  
Deutschland GmbH  
Tel: 49 6175 933610  
Fax: 49 6175 933627

**GREECE**  
Eliofil S.A.  
Tel: 30 210 28 49 200  
Fax: 30 210 28 42 226

**GUATEMALA**  
Comeca  
Tel: 502 2420 8989  
Fax: 502 2334 7453

**HONG KONG**  
MF Jebson Automotive Ltd  
Tel: 852 2366 2017  
Fax: 852 2191 9117

**HUNGARY**  
Frontosa Motor Ltd  
Tel: 36 1 270 0755  
Fax: 36 1 270 0785

**ITALY**  
Triumph Motorcycles SRL  
Tel: 39 02 934 5451  
Fax: 39 02 935 82575

**JAPAN**  
Triumph Japan KK  
Tel: 81 3 3261 1701  
Fax: 81 3 3261 1725

**KUWAIT/SAUDI  
ARABIA/BAHRAIN**  
Desert Star Trading Co  
Tel: 965 484 9830  
Fax: 965 484 0078

**MALTA**  
Cycle World Ltd  
Tel: 356 2147 0053  
Fax: 356 2147 0051

**MEXICO**  
Triumph Mexico  
Tel: 52 81 1001 8900  
Fax: 52 81 1001 8942

**NEW ZEALAND**  
Triumph Motorcycles (NZ) Ltd  
Tel: 64 9 270 0904  
Fax: 64 9 270 0680

**NORWAY**  
Triumph Motorcycles AB  
Tel: 46 868 00725  
Fax: 46 868 00785

**POLAND**  
Inter Motors S.A.  
Tel: 0801 88 20 88  
Fax: 22 714 1918

**PORTUGAL**  
Cimpomovel Dealer, SA  
Tel: 351 21 845 5300  
Fax: 351 21 845 5301

**PUERTO RICO**  
Bella Retail Group  
Tel: 787 620 6970  
Fax: 787 620 6990

**SINGAPORE**  
Cyclenet Pte Ltd  
Tel: 65 6295 6393  
Fax: 65 6295 0748

**SLOVENIA**  
Triumph Motorrad  
Deutschland GmbH  
Tel: 49 6175 933610  
Fax: 49 6175 933627

**SOUTH AFRICA**  
Triumph South Africa  
Tel: 27 11 448 1112  
Fax: 27 11 448 2340

**SPAIN**  
Proeuropa Motor SL  
Tel: 34 902 255 275  
Fax: 34 902 433 675

**SWEDEN**  
Triumph Motorcycles AB  
Tel: 46 868 00725  
Fax: 46 868 00785

**SWITZERLAND**  
Triumph S.A.S.  
Tel: 33 1 64 62 38 38  
Fax: 33 1 64 80 58 28

**TAIWAN**  
Triumph Taiwan  
Motorcycles Limited  
Tel: 886 2 8511 0185  
Fax: 886 2 8511 0187

**UNITED KINGDOM**  
Triumph Motorcycles Limited  
Tel: 44 1455 251700  
FAX: 44 1455 453104

**USA**  
Triumph Motorcycles  
(America) Ltd  
Tel: 1 678 854 2010  
Fax: 1 678 854 2025

**VENEZUELA**  
Corporacion Automotriz RV, C.A.  
Tel: 58 212 953 7772  
Fax: 58 212 952 6684

Your local dealer:

[www.triumphmotorcycles.com](http://www.triumphmotorcycles.com)

